

Tele Infra Structure Services



www.detectelectronics.com



About Us



Detect Electronics Systems (I) Private Limited, a sister company of Detect Electronics System with 14 years of experience our existence in the market is marked in providing customer satisfactory service. DETECT constitutes of well trained and skilled manpower in OFC, Civil Engineering, Telecommunications, Electrical and Contract Management fields. It has attained laurels in timely completion of projects and quality management. This has been possible because of its dynamic and diligent team which towards developing best solutions in telecom system, implementation, integration, maintenance, electrical and civil construction and quality management. It has proved itself as a pioneer in quality controlled turn key works in diversified sectors.



About Director

Satish Ajabe is the Director of Detect Electronics Systems (I) Private Limited Located at Aurangabad.

Satish started his career at a young age of 21 after Bachelor of engineering from Pune University and founded DETECT, with a modest capital, in the year 1998. Today, at 33 he heads a successful enterprise, amongst the top companies, with of over 18 crores turn over.

Satish has played a pivotal role in Detect's phenomenal growth in a short span of fourteen years. He has been closely involved from the very beginning in the growth of Detect in the telecommunication services sector.



Services

- Tower Foundation Work.
- Tower Erection Work.
- Tower Electrification Work.
- RF Installation Work.
- OFC Work.



CIVIL

DETECT involved in Civil construction of GBT, RTT & BTS foundation for mobile towers.

Tower Foundation.

RTT (9, 12,15,18,21,24,30 meters)

GBT – 4 Leg & Irthins (40,60,80 meters)

Monopole – 20 meters, 40 meters

Tower Erection.

RTT (9, 12,15,18,21,24,30 meters)

GBT (40 meters, 60 meters, 80 meters)s

BTS Foundation.

Tower Painting.

Tower Strengthening.



Services

ELECTRICAL SOLUTIONS

We look at complete Electrical Solutions required for Tower

- Approvals from MSEDCL for Load & Transformer.
- Installation & Commissioning of LT & HT.
- Connectivity between LT/HT, DG & BTS.
- PMU installation.
- Bore/Plate Earthlings.
- Installation & Commissioning of DB.
(MCB & MCCB), ICTPN, SERVO Stabilizer.
- Commissioning of DG Panel.



TELECOM SOLUTIONS

DETECT provides the service at Radio Systems Installation & Commissioning of BTS, BSC and MSC SYSTEM, Installation & Commissioning of 8 MB, 34MB & STM OFC System, C- DOT Equipment Installation & Commissioning, i.e. C- DOT 256, SBM Exchanges, MBM Exchanges, Installation & Commissioning of OCB Exchanges (2 K RSU and 10 K), Installation of EWSD Exchange (5K TAX) and Providing NTC on WLL System 1000 Nos.

- Site Engineering Survey.
- Confirmation of Infrastructure completion & functionality
- Layout / plan for equipment installation.
- Transmission & RF Data For the Site.
- Material checkup at Site and Far end.
- BTS & Transmission Rack installation & grouting.
- Installation of indoor and outdoor Cable Trays .
- Installation of Battery Bank & S.M.P.S.



TELECOM SOLUTIONS

- ✦ Connect orisation (IF,RF,PCM Alarm etc)
- ✦ Cable laying (RF, IF, Jumpers, PCM, Alarm, AC/DC Supply OFC etc.)
- ✦ Routing & proper fixing of all cables e.g. IF, RF, Jumpers, Microwave, Alarm, PCM,AC/DC Supply, earthling, OFC etc (Over cable trays, casing capping, saddling etc)
- ✦ Antennae installation GSM & MW (Azimuth, Height, tilt)
- ✦ Weather proofing, earthlings kits installation etc
- ✦ Equipments Earthlings, EGB & IGB , Hatch plate installation, extending earths using suitable lugs sleeves.
- ✦ Labeling all cables at both ends, Marking over M/W antenna, VSWR, Power / level measurements, BER measurements,
- ✦ Commissioning and alignment of MW Link.
- ✦ Commissioning of BTS & Integration, call test, Alarm test.
- ✦ Site Cleaning & handover of extra material.
- ✦ Drive test, optimization of network etc
- ✦ ASM & AGE implementation & Acceptance Test



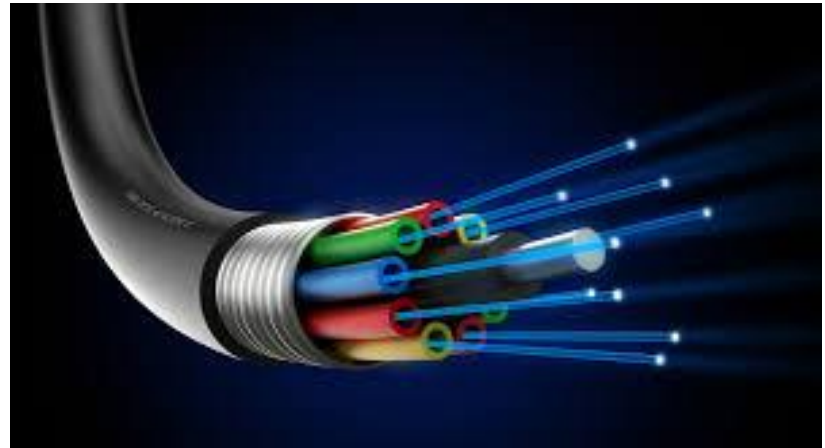
Services

OFC

In view of technology development in telecom infrastructure, Optical Fiber Cable occupied its own space to provide advanced 3G features for the fast growing world. OFC is a part of DETECT, which starts with Route survey, Route marking, Trenching, Ducting (with required protection like GI, Half/Full round RCC, PCC, DWC), Back filling, Aerial OFC, DIT, Blowing, Splicing, Chambers for Splicing and Looping, Earthlings, Termination & Route lit up.

DETECT provides complete solution required for OFC

-  Trenching.
-  Ducting.
-  Blowing.
-  Splicing.
-  Termination.



Project Management

Quality management is a method of ensuring the efficiency in designing, developing and implementing a product or service with respect to the system and its performance. Quality management can be considered to have three main components: quality control, quality assurance and quality improvement. Quality management is focused not only on product quality, but also the means to achieve it. Quality management therefore uses quality assurance and control of processes as well as products to achieve more consistent quality. DETECT considers Quality as a key factor at OFC areas like route survey including touch points and landmarks, Trenching, Ducting, Backfilling, Blowing, Splicing, Termination, Documentation of Lessoning, Measurement and billing as per the client specifications.



Milestones

Work Completed

- **Tower Foundation Work** : 2000 sites (GBT, RTT, Monopoles across the Maharashtra).
- **OFC Work** : 1000 KMS (Work Trenching, Ducting, Blowing, Splicing, Termination).
- **PMC for OFC work** : 1500 KMS(Idea Cellular Limited).
- **RF Installation** : 3000 sites (Installation for 2G,3G,4G).



Clients





Corporate Office

DETECT ELECTRONICS SYSTEMS (I) PVT LTD

Plot No.55, Shree Nagar ,Near Ulkanagari, Aurangabad - 431005

Telefax:- 0240 – 2357400, Mobile no.- 9922260007

Email :- info@detectelectronics.com, Visit us :- www.detectelectronics.com

Branch Office

DETECT ELECTRONICS SYSTEMS (I) PVT LTD

No.59B, 3rd Cross Cholurpalya, Magadi Road, Vijay Nagar, Bangalore-560023

